



Strategic A Priori Power in the European Union's Codecision Procedure

Stefan Napel

Department of Economics, University of Bayreuth, Germany
(eMail: stefan.napel@uni-bayreuth.de)

Mika Widgrén

Turku School of Economics, PCRC, ETLA, CEPR and CESifo

Abstract In this paper, we evaluate the distribution of power within the Council of Ministers (CM) in the EU's most used legislative procedure, the *codecision procedure*. Although our main emphasis is on the power distribution inside CM, we do *not* make the assessment in isolation from the European Parliament (EP) because it 'co-decides' on the respective policy outcomes. We investigate a procedural non-cooperative model of codecision, in which members of CM and EP act strategically. CM and EP are thus evaluated as integrated parts of EU decision-making. We relate our findings to studies that disregard the effects of inter-institutional interaction on the intra-institutional distribution of power. Previous analysis of the inter-institutional balance of power between CM and EP is extended by explicitly accounting for weighted voting.

Keywords European integration, codecision procedure, Council of Ministers, power

1. Introduction

The question of national influence on legislation adopted by the European Union (EU) is of interest and importance to politicians, the general public, and academics alike. It has inspired a great number of applied studies and vigorous methodological debate. The applications have highly concentrated on the intra-institutional distribution of power in the EU's Council

of Ministers, which is the EU's main decision-making body, using mathematical measures of voting power that have roots in cooperative game theory.¹ These studies started to mushroom in the early 1990s, and have often been inspired by EU enlargements and institutional reforms where, indeed, the Council was the key institution. A quite separate line of research has focused on inter-institutional power analysis, assuming spatial preferences and investigating non-cooperative voting games (see e. g. Steunenberg 1994, Tsebelis 1994 or, for an extensive survey, Steunenberg and Selck 2006).

The cooperative index-based approach has been heavily criticized by political scientists who analyze EU decision-making via spatial voting games, because it does not take preferences and strategic aspects into account (see e. g. Garrett and Tsebelis 1999). However, in the spatial voting games literature, the analysis of intra-institutional power relations, and especially the distribution of power in the Council, is still in its infancy. There, it has mostly been ignored that the Council applies a (rather complex) weighted voting rule.

In this paper, we apply the unified framework for power analysis introduced in Napel and Widgrén (2004). The framework generalizes the measurement ideas underlying e. g. the Penrose-Banzhaf or Shapley-Shubik indices to non-cooperative voting models and preference-based strategic interaction. Thus the major limitations of traditional indices that have been pointed out by Garrett and Tsebelis (amongst many others) are overcome. The framework even allows to evaluate the distribution of power at the inter-institutional and intra-institutional levels simultaneously.

We compute the distribution of power inside the Council of Ministers for a priori unknown spatial preferences. A key feature, which distinguishes our intra-Council power analysis from the existing studies that we are aware of, is that we consider an actual decision procedure, namely the so-called *codecision procedure*. The procedure implies that pivotality of an individual member inside the Council, which is picked up by conventional power indices, does *not* automatically translate into power to affect the collective decision. The reason is that the codecision procedure also involves the European Parliament; and the latter may be the truly critical player on a given issue. The individual chances of being pivotal or critical for a *decision* (rather than only for the Council's opinion on some matter), which voting power analysis ultimately is about, are affected differently for different Council members by the Parliament's presence. This means that the standard indices considered in previous investigations can give a distorted view of the

¹For examples see e. g. Widgrén (1994), Laruelle and Widgrén (1998), Felsenthal and Machover (2001), Felsenthal and Machover (2004), Leech (2002), Baldwin and Widgrén (2004).

actual distribution of a priori power amongst the members of the Council of Ministers.

The codecision procedure has already been investigated by Napel and Widgrén (2006) in some detail. The focus there, however, was put on the *inter*-institutional balance of power. The critical determinant of the relative influence of the Council vs. the Parliament on codecision outcomes turned out to be the respective decision quota. So, in order to simplify the analysis, we concentrated on the supermajority aspect of Council voting rules, and ignored the asymmetries in voting weight. The present paper obviously has to give up this simplification, because it deals with the distribution of power inside the Council, and the weight distribution is essential for that. As a welcome side-benefit of studying weighted voting in the Council, we obtain a better assessment of the inter-institutional distribution of power than in Napel and Widgrén (2006).

The numerical differences to our earlier assessment of the power relation between Council and Parliament, and similarly to assessments of the intra-Council power distribution by standard indices, actually turn out to be relatively small. This is good news, but it should not be mistaken as an excuse for continuing with the past disregard of procedures and strategies. In particular, we identify two biases of standard power measures: they count intra-institutional pivot positions for which the considered institution is outcome-irrelevant because, first, the outcome is determined by other institution(s) (here: EP) or, second, the status quo prevails because the involved institutions block each other. It may be just a coincidence that the opposite biases induced by these two types of miscountings happen to approximately cancel for most EU member states in the case of codecision under the Nice or Lisbon qualified majority rules. A change of the procedure or of these voting rules (e. g. after a further EU enlargement) could easily render one of the biases dominant, and then result in much bigger deviations between non-strategic and strategic a priori power.

The remainder of the paper is organized as follows: Section 2 first introduces intra-Council decision-making. As it is our main target of assessment, some basic facts about it are needed. We then construct a simple game-theoretic model of the codecision procedure, which captures strategic inter-institutional interaction. We discuss the equilibrium outcomes predicted by this model, which are then used for the power analysis that is presented in Section 3. Its results are reported in Section 4 and, finally, Section 5 concludes.

2. The Codecision Procedure

2.1 Preliminaries

In the following, we will consider a one-dimensional convex Euclidean policy space $X = [0, 1] \subset \mathbb{R}$. The legislative *status quo* regarding the (a priori random) issue which is up for a decision is denoted by $q \in X$. The considered political actors are all assumed to have single-peaked preferences regarding this issue characterized by an individual *bliss point* or *ideal point* $\lambda \in X$: the smaller the distance $d(\lambda, x)$, the higher the agent values a policy $x \in X$. We suppose that not only do the 750 members of EP and the 27 national government representatives in CM have such preferences, but that there are representatives of EP and CM who possess aggregated spatial preferences of the same kind (possibly with $\lambda = q$ if the institution cannot reach an internal consensus). It is then possible to predict the codecision outcome regarding the considered issue by specifying, first, how EP's and CM's respective internal decision rules translate preferences of individual members into the institutions' ideal points and, second, how these institutions interact in order to reach a joint decision.

Note that in the codecision procedure we can disregard the preferences of the European Commission since it is a powerless actor in that procedure (Napel and Widgrén 2006). We will denote the ideal point that characterizes aggregate preferences of EP by π and that of CM by μ . Both are determined for a given issue by the respective pivotal player inside these bodies. The ordered individual ideal points of the members of the Council of Ministers will be denoted by $\mu_{(1)} \leq \dots \leq \mu_{(27)}$; those of individual members of EP by $\pi_{(1)} \leq \dots \leq \pi_{(750)}$.

2.2 Intra-Council Decision Making

The weighted voting system which is used for decision making in the Council was practically unchanged from the Treaty of Rome in 1957 until the Treaty of Nice in 2001. The Nice rules came into force on November 1, 2004 (at first in a somewhat modified transitional form), and basically maintained the old qualified majority voting (QMV) framework. However, it added two extra criteria, the so-called *safety-nets*, concerning the number of 'yes'-votes and the share of the total EU population which they represent. Specifically, the current QMV requirement consists of three criteria: 255 out of 345 votes (73.9%), a simple majority of member states (14 out of 27) and 62% of the total EU population. The second and third requirements only have a negligible effect on possible winning coalitions (see e. g. Baldwin et al. 2001,

or Felsenthal and Machover 2001), and affect the quantitative results presented in Section 3 only at the 5th or 6th digit. The Nice voting weights are presented in Table 1 below.

The new Lisbon Treaty's major revision to intra-Council voting rules is the switch from weighted voting to a dual majority system with additional requirements: a winning coalition must represent at least 55% of EU member states and 65% of the total EU population. Moreover, during the final negotiations of the Lisbon's Treaty precursor, the Constitutional Treaty, two last-minute summit compromises were inserted.² They are the requirement of at least 15 members voting 'yes' in order to pass proposals, and of at least four countries voting 'no' in order to block proposals. Theoretically, both have an impact in EU27, as 15 members is 55.6% of the membership. In any power computations, however, their effect is very small. The new voting rules should have come into force in November 1, 2009, as part of the Constitutional Treaty, but French and Dutch referenda rejected the latter in Spring 2005. The subsequent renegotiations left the provisions for CM's voting rules unchanged.

As a benchmark for our analysis below, Table 1 also contains the intra-Council distribution of power under the Nice and Lisbon Treaty voting rules according to the *Shapley-Shubik power index (SSI)* (Shapley 1953; Shapley and Shubik 1954). This index is closest in spirit to the strategic analysis pursued below, and in particular closer than the other main power index, the *Penrose-Banzhaf power index* (Penrose 1946; Banzhaf 1965). We will thus give traditional power analysis its 'best shot' in the later comparisons. Many qualitative observations, e. g. that the Lisbon rules make the biggest four countries and Romania more powerful than they were under the Nice rules, actually do not depend on which power measure is used.

2.3 *The Codecision Procedure*

The European Union's *codecision procedure* was introduced by the Maastricht Treaty, and initially applied to only 15 areas of Community activity. Its current version came into force in May 1999, introduced by the Treaty of Amsterdam. It presently pertains to 43 areas; its domain of application will be expanded further by the Lisbon Treaty. At the moment the procedure does not yet cover decisions on agriculture or taxation, but applies to very relevant policy areas such as the internal market, environment, transport, public health, education and research, and the Regional Development Fund.

² These are called *keys* in EU jargon. They, very literally speaking, mean that the Lisbon Treaty involves a quadruple (rather than only dual) majority requirement.

Table 1 — The distribution of 2004 population and power in the EU27 under the Nice and Lisbon Treaty rules evaluated by the Shapley-Shubik index

Member state	Population in 100,000s	Nice weight	SSI (Nice)	SSI (Lisbon)
Belgium	10396.4	12	0.03398	0.02317
Bulgaria	7801.3	10	0.02811	0.01877
Czech Republic	10211.5	12	0.03398	0.02277
Denmark	5397.6	7	0.01952	0.01517
Germany	82531.7	29	0.08736	0.15854
Estonia	1350.6	4	0.01099	0.00896
Greece	11041.1	12	0.03398	0.02416
Spain	42345.3	27	0.08017	0.07609
France	61684.7	29	0.08717	0.11321
Ireland	4027.5	7	0.01952	0.01330
Italy	57888.2	29	0.08694	0.10490
Cyprus	730.4	4	0.01097	0.00809
Latvia	2319.2	4	0.01099	0.01039
Lithuania	3445.9	7	0.01952	0.01208
Luxembourg	451.6	4	0.01097	0.00762
Hungary	10116.7	12	0.03398	0.02250
Malta	399.9	3	0.00816	0.00754
Netherlands	16258	13	0.03674	0.03250
Austria	8114	10	0.02811	0.01964
Poland	38190.6	27	0.07989	0.06689
Portugal	10474.7	12	0.03398	0.02326
Romania	21711.3	14	0.03985	0.04146
Slovenia	1996.4	4	0.01099	0.00995
Slovakia	5380.1	7	0.01952	0.01511
Finland	5219.7	7	0.01952	0.01491
Sweden	8975.7	10	0.02811	0.02087
United Kingdom	59651.5	29	0.08699	0.10815

The bargaining outcome that EP and CM expect to result from invoking the Conciliation Committee plays a crucial role at earlier stages of the procedure. Assuming complete information about preferences and using backward induction, one can conclude that it is indeed *the* determinant of any codecision agreement if all agents are strategic.

Accepted new legislation will usually come into effect at some date in the medium-term future. It is therefore reasonable to assume that neither EP nor CM has a pronounced preference for agreeing on a policy change a few weeks sooner rather than later. The codecision outcome can then be identified with the policy which CM and EP expect to agree on in Conciliation (either a new policy or the status quo). Therefore, quantitative analysis of EP's and CM's influence on codecision outcomes can be confined to the Conciliation stage.

We see no empirical or theoretical reasons to consider either EP or CM a more impatient or skilled bargainer. So we will use the *symmetric Nash bargaining solution* to predict the Conciliation agreement and thus, using backward induction, the codecision outcome. For our unidimensional policy space $X = [0, 1]$ and the benchmark case of utility that linearly decreases with distance, the symmetric Nash bargain corresponds to agreement on the institutional aggregate ideal point which is closer to the status quo whenever there are gains from trade, i. e. if both EP and CM want to move away from the status quo in the same direction (see Napel and Widgrén 2006 for a detailed derivation). Formally, we have

$$\text{sign}(q - \pi) = \text{sign}(q - \mu) \implies x^*(\pi, \mu) = \begin{cases} \pi; & d(\pi, q) \leq d(\mu, q) \\ \mu; & d(\pi, q) > d(\mu, q). \end{cases} \quad (2.1)$$

The Council's preferences, captured by its ideal point μ , are determined internally according to the Nice or Lisbon voting rules, which we discussed above. Looking at the Nice rules, let $w(\mu_{(i)})$ denote the number of votes (i. e. the voting weight) of the minister who has ideal point $\mu_{(i)}$, and $p(\mu_{(i)})$ the size of the population that he represents.⁵ If CM considers a change of the status quo q to something more to the left, the countries holding the left-most positions $\mu_{(1)}$, $\mu_{(2)}$, etc. will be the most enthusiastic about this. The critical CM member is the country that first brings about the required qualified majority as less and less enthusiastic supporters of a change are

⁵ This already uses the fact that if countries' ideal points result from independent draws from a continuous probability distribution on X , such as the uniform one considered below, then there is almost surely only a single country with position $\mu_{(i)}$. So $w(\mu_{(i)})$ and $p(\mu_{(i)})$ will be well-defined with probability one.

added to the coalition which endorses the new policy. We refer to this critical member as CM's *right pivot* R , and to its ideal point as CM's *right pivot position* μ_R . Under the Nice voting rules, the right pivot can be written as

$$R^{Nice} = \min \left\{ r \in \{14, \dots, 27\} : \sum_{i=1}^r w(\mu_{(i)}) \geq 255 \wedge \sum_{i=1}^r p(\mu_{(i)}) \geq 0.62P^{EU} \right\}, \tag{2.2}$$

where P^{EU} refers to the EU's total population; we denote its ideal policy by $\mu_R^{Nice} \equiv \mu_{(R^{Nice})}$. This bliss point – reflecting the position of the government that is critical inside CM when coalition formation starts from the left-most position – is taken to be CM's aggregate position if the interaction with the European Parliament concerns a change of q towards the left. It is the policy alternative that internally – inside CM – beats the status quo if that is sufficiently far to the right, and also beats any other status quo-beating policy.

Similarly, we have

$$L^{Nice} = \max \left\{ l \in \{1, \dots, 14\} : \sum_{i=l}^{27} w(\mu_{(i)}) \geq 90 \wedge \sum_{i=l}^{27} p(\mu_{(i)}) \geq 0.38P^{EU} \right\}, \tag{2.3}$$

and $\mu_L^{Nice} \equiv \mu_{(L^{Nice})}$, reflecting the position of the government that is critical inside CM when coalition formation starts from the right-most position. It will be CM's aggregate position when a change of q towards the right is contemplated.

Analogously, the Lisbon Treaty's voting rules lead to μ_R^{Lisbon} and μ_L^{Lisbon} , defined by

$$R^{Lisbon} = \min \left\{ \min \left\{ r \in \{15, \dots, 27\} : \sum_{i=1}^r p(\mu_{(i)}) \geq 0.65P^{EU} \right\}, 24 \right\} \tag{2.4}$$

and

$$L^{Lisbon} = \max \left\{ \max \left\{ l \in \{1, \dots, 14\} : \sum_{i=l}^{27} p(\mu_{(i)}) \geq 0.35P^{EU} \right\}, 4 \right\}. \tag{2.5}$$

They are the position variables which need to be considered regarding whether the double (or quadruple) majority inside CM, which is required by the Lisbon Treaty, can be obtained by some policy alternative. Note that,

under either Treaty, no policy $x \in X$ would be supported by the required majority in CM if $\mu_L^j < q < \mu_R^j$.

Concerning the European Parliament, its currently 750 members need to approve any Conciliation compromise by simple majority. Entering negotiations with CM about some policy change to the right of the status quo q , most of the conceivable positions of the EP delegation are such that a majority of MEPs would find it beneficial to intervene and select a different delegation. More concretely, consider the ordered MEP ideal points $\pi_{(1)} \leq \pi_{(2)} \leq \dots \leq \pi_{(750)}$ and a provisional bargaining position π with $q < \pi < \pi_{(374)}$. Parliamentarians with ideal points $\pi_{(374)}, \dots, \pi_{(750)}$ then have the necessary majority and common interest to instead select some delegation with $\pi \geq \pi_{(374)}$ as EP's position for Conciliation negotiations. Similarly, MEPs with ideal points $\pi_{(1)}, \dots, \pi_{(376)}$ would block a position $\pi > \pi_{(376)}$. One can hence restrict EP's ideal point in negotiations about policies $x > q$ to $\pi \in [\pi_{(374)}, \pi_{(376)}]$. Recall that according to the Nash bargaining solution, it is the institution whose ideal point is closer to the status quo which is determining the Conciliation agreement. With this, and anecdotal evidence on EP's interest in being perceived as a powerful institution in the EU, in mind, we take the influence-maximizing $\pi = \pi_{(374)}$ to be EP's position in negotiations about $x > q$ and refer to the corresponding MEP as EP's *pivotal player*. By analogous reasoning, we identify EP with position $\pi = \pi_{(376)}$ for policies $x < q$.⁶

Note that, in principle, the internal position of EP need not coincide with the position taken by its delegation to the Conciliation Committee. In general, there could be gains from strategically picking a delegation whose interests diverge from the pivotal voter's (see e. g. Segendorff 1998). However, under the above assumptions this cannot be advantageous: by Equation (2.1), any Conciliation agreement replacing the status quo amounts to the ideal point of either EP's or CM's delegation. Picking an EP delegation with a position to the left or right of its 'true' ideal point π thus has either no effect (CM's position is closer to status quo) or actually hurts EP's pivot. Namely, it may induce agreement on the distorted position π' instead of π when this would have been the outcome in the unmanipulated case, or it prevents agreement on the position of CM when that is actually closer to π than π' and hence preferable by EP's pivot.

It can be checked that negotiations in the Conciliation Committee can, for given preferences of MEPs and members of CM, never be simultaneously about policies $x > q$ and policies $x' < q$: if both institutions support, say,

⁶Quite often in the spatial voting literature, EP is treated as a unitary actor. However, this simplification is not needed for the purposes of this paper. See Napel and Widgrén (2006) for robustness checks regarding the modeling of EP.

moving to the right of the status quo, i. e. both $\pi_{(374)}$ and $\mu_{(L)}$ lie to the right of q , then there is necessarily insufficient support for any $x < q$ because $\pi_{(376)} \geq \pi_{(374)}$ and $\mu_{(R)} \geq \mu_{(L)}$ must also lie to the right of q . This allows us to take μ as the well-defined ideal point of CM regarding any issue for which EP and CM want to change the status quo in the same direction, i. e. whenever both have an interest in reaching a deal. Note that μ is a function of countries' individual unordered ideal points μ_1, \dots, μ_{27} – which give rise to the ordered ideal points $\mu_{(1)} \leq \dots \leq \mu_{(27)}$ – and the voting rule (either Nice or Lisbon).

3. Power Analysis

In order to obtain quantitative statements regarding the expected influence of individual Council members or EP on EU decisions, we apply the framework proposed by Napel and Widgrén (2004) for the analysis of power in collective decision making. It defines a player's *a priori power* in a given decision procedure and for a given probabilistic distribution of all relevant players' preferences as the *expected change to the equilibrium decision which would be brought about by a change in this player's preferences*. Alternatively, one could also make probabilistic assumptions about players' *actions*, rather than preferences which induce actions. Traditional power indices take this 'short-cut', but thus lose the ability to transparently account for strategic interaction.

The framework links power analysis to the question: which impact would a marginal shift of a given player's ideal policy (caused e. g. by a lobbyist, who evaluates all players' power before targeting any particular one) have on the collective decision? This approach to power measurement via a *sensitivity analysis* of collective decisions generalizes the weighted counting of players' pivot positions which is the basis of conventional power indices.

Before one can make statements about a priori power, one first needs to explicate and evaluate a posteriori power for a given preference profile. We will do so by considering the effect of a *marginal* shift of ideal points π or μ_1, \dots, μ_{27} to the left or right on the anticipated policy outcome. This effect is captured by the (partial) derivatives of the predicted outcome shown in equation (2.1) above. So the *a posteriori power* of EP, i. e. that for a given realization of status quo q and ideal points π_1, \dots, π_{750} and μ_1, \dots, μ_{27} , is

$$\frac{\partial x^*(\pi, \mu, q)}{\partial \pi} = \begin{cases} 1 & \text{if } q < \pi < \mu \text{ or } \mu < \pi < q, \\ 0 & \text{otherwise.} \end{cases} \quad (3.1)$$

This formalizes that any (small) change of the player's ideal point with smaller status quo distance translates into a same-size shift of the agreed

policy, provided there is agreement about changing the status quo at all.

What we are really interested in, however, is the *a priori* power of actors such as EP, namely, the influence not on a single issue but on average for many issues or – taking the ‘veil of ignorance’-perspective of constitutional design – *in expectation*. In particular, our *strategic measure of power (SMP)*, derived from Napel and Widgrén (2004), is the expected impact that any marginal shift of EP’s ideal policy π would have on the codecision outcome,

$$\xi_\pi = \Pr(\tilde{q} < \tilde{\pi} < \tilde{\mu}) + \Pr(\tilde{\mu} < \tilde{\pi} < \tilde{q}), \tag{3.2}$$

where \tilde{q} , $\tilde{\pi}$, and $\tilde{\mu}$ denote the random variables corresponding to status quo and institutional ideal points, and where a plausible a priori probability distribution of these random variables is assumed. For constitutional analysis, it is in our view most natural to assume that the individual ideal points of MEPs as well as of Council members are independently, identically, and – in line with the *principle of insufficient reason*, which is also invoked regarding player orderings or ‘for’-or-‘against’ preferences by the Shapley-Shubik and Penrose-Banzhaf indices – *uniformly* distributed on the policy space X (here, the unit interval $[0, 1]$).⁷ All our computations will hence be based on the a priori assumption of independently uniformly distributed individual ideal points, as well as an independently uniformly distributed status quo q . Numerical results on EP’s SMP, ξ_π , will be reported in the next section.

Analogously, for an individual member k of CM, we obtain

$$\frac{\partial x^*(\pi, \mu(\mu_1, \dots, \mu_{27}), q)}{\partial \mu_k} = \begin{cases} 1 & \text{if } (q < \mu < \pi \text{ or } \pi < \mu < q) \text{ and } \mu = \mu_k, \\ 0 & \text{otherwise} \end{cases} \tag{3.3}$$

for k ’s a posteriori power on a given issue, and

$$\xi_{\mu_k} = (\Pr(\tilde{q} < \tilde{\mu} < \tilde{\pi} \mid \tilde{\mu} = \tilde{\mu}_k) + \Pr(\tilde{\pi} < \tilde{\mu} < \tilde{q} \mid \tilde{\mu} = \tilde{\mu}_k)) \cdot \Pr(\tilde{\mu} = \tilde{\mu}_k) \tag{3.4}$$

as k ’s SMP, averaging over a large number of issues with independently $[0, 1]$ -uniformly distributed individual ideal points and status quo.

Asymmetric voting weights in CM imply that conditioning on distinct events $\{\tilde{\mu} = \tilde{\mu}_i\}$ indeed affects the probability of event $\{\tilde{q} < \tilde{\mu} < \tilde{\pi}\}$. In particular, large countries with high voting weight are pivotal relatively more

⁷ Assuming i. i. d. uniform distributions on $X = [0, 1]$ implies that $\tilde{\pi}$ is beta-distributed with parameters 375 and 376. The distribution of $\tilde{\mu}$ is considerably more complicated because of weighted voting.

Fig. 2 — Probability of being pivotal at a given position

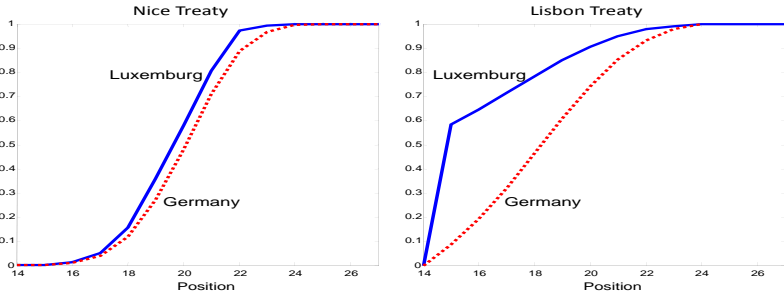
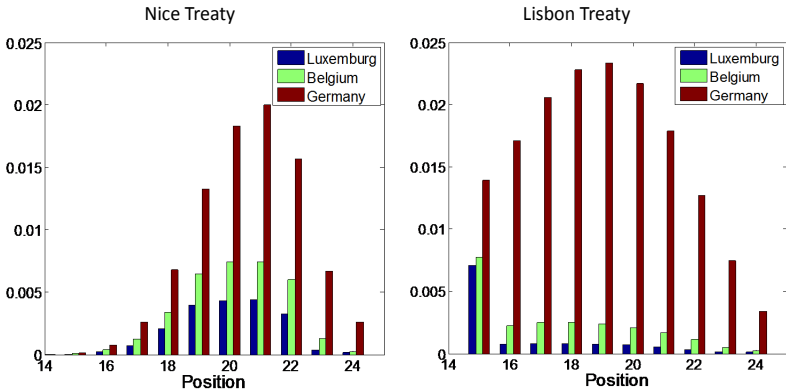


Fig. 3 — Conditional cumulative probability of being pivotal at a given position



often in coalitions that already include many others – who have, on average, smaller weight – and, therefore, their associated spatial positions when being pivotal tend to be located more towards the extremes (e. g. quite far to the right if coalition-formation starts from the left). Figure 2 shows the probabilities

$$\Pr(\tilde{R}^j = i \wedge (\tilde{R}^j) = k)$$

of exemplary large, medium-sized, and small countries k being pivotal under the voting rules $j \in \{Nice, Lisbon\}$ at a particular rank position i when coalition-formation starts from the left, i. e. the chances to bring about the required qualified majority as the i -th member of a coalition that already includes $i - 1$ members (with decreasing enthusiasm about changing the status quo to the left).

Note that the Lisbon Treaty visibly shifts these distributions of pivotal positions to the left. More swings, thus, take place in smaller coalitions. Especially this holds for smaller countries in our sample. The explanation is two-fold. First, for small countries the membership criterion is a much more important source of influence than the population criterion. That explains why Belgium and Luxembourg have most of their pivotal positions at $i = 15$, which is exactly the effective Lisbon membership threshold. Second, for big countries like Germany the population criterion contributes more to power. The criterion involves a threshold of slightly more than 315 million citizens. The rank distribution of Germany's pivotal positions has its mode at rank 19, which in expected terms corresponds to 343 millions (using the average population per country). With its population of 82 millions, Germany is easily able to swing winning coalitions which pass the population threshold into losing ones.

Figure 3 illustrates the corresponding *conditional* pivotal position distributions (in cumulative terms) for a small and a large country, Luxembourg and Germany. Already under the Nice rules, Germany has its (a priori random) right pivot positions more to the right than Luxembourg; it is pivotal at a rank position that is larger than that of Luxembourg in the sense of first-order stochastic dominance. This becomes much more pronounced under the Lisbon rules, because their focus on population sizes makes Germany an even 'larger' player, relatively speaking, than it was under the Nice rules – meaning that a random coalition of fixed size $i - 1$ is typically farther away from passing the voting thresholds than under the Nice rules; so that a greater coalition size $i - 1$ is compatible with becoming a winning coalition only after Germany joins. In summary, small countries exert power in relatively small coalitions (with the help of relatively big countries), and big countries exert power in relatively big coalitions containing a relatively high number of small countries.

4. Results

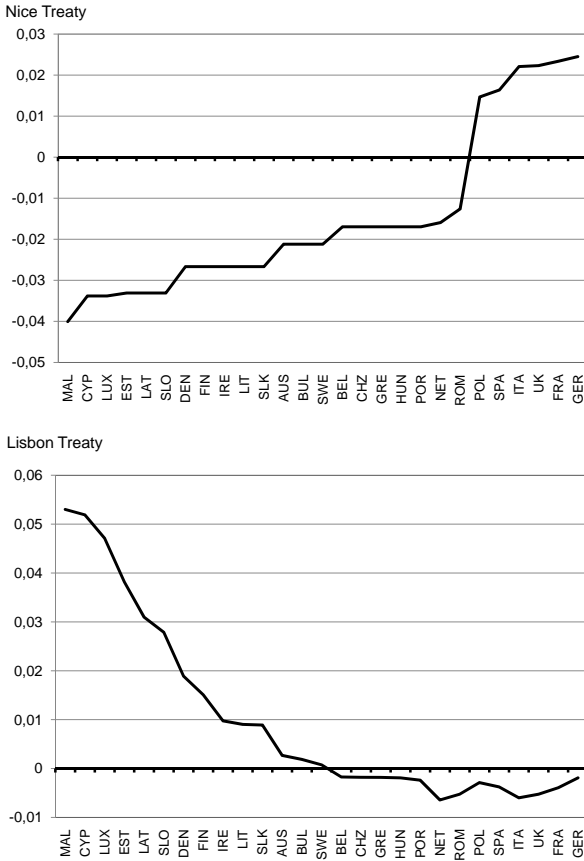
Table 2 reports the SMP values of individual Council members and EP for EU27. It also shows, as a measure of *relative* power inside CM, the *normalized SMP values (NSMP)*, and the relative differences between the SSI values (cf. Table 1) and the intra-CM power assessment implied by the NSMP.

First, it is an important observation that the relative differences between the SSI and NSMP values are not huge. The maximal deviation is 5% (for Malta, under the Lisbon rules). In general, the relative differences, either positive or negative, are bigger for small countries. This may seem natural on the one hand since their SSI values are smaller; on the other hand this

Table 2 — Strategic power in EU27 under Nice and Lisbon Treaty rules and the intra-CM difference to SSI in the codecision procedure (EP as 750 MEPs)

Member state	SMP Nice	SMP Lisbon	NSMP Nice	NSMP Lisbon	(SSI – NSMP)/ SSI% Nice	(SSI – NSMP)/ SSI% Lisbon
Belgium	0.01819	0.01299	0.03456	0.02323	-1.69958	-0.26766
Bulgaria	0.01511	0.01047	0.02870	0.01873	-2.12293	0.20455
Czech Republic	0.01819	0.01276	0.03456	0.02282	-1.69958	-0.22388
Denmark	0.01055	0.00842	0.02004	0.01505	-2.67225	0.80735
Germany	0.04488	0.08886	0.08523	0.15891	2.45561	-0.23532
Estonia	0.00598	0.00482	0.01135	0.00861	-3.31788	3.88339
Greece	0.01819	0.01355	0.03456	0.02424	-1.69958	-0.31615
Spain	0.04152	0.04267	0.07886	0.07631	1.64353	-0.28405
France	0.04482	0.06356	0.08513	0.11366	2.33462	-0.40287
Ireland	0.01055	0.00733	0.02004	0.01311	-2.67225	1.37046
Italy	0.04476	0.05897	0.08502	0.10545	2.20506	-0.53191
Cyprus	0.00598	0.00431	0.01135	0.00771	-3.31788	4.78232
Latvia	0.00598	0.00565	0.01135	0.01010	-3.31788	2.82268
Lithuania	0.01055	0.00663	0.02004	0.01185	-2.67225	1.90708
Luxembourg	0.00597	0.00404	0.01134	0.00722	-3.38961	5.27609
Hungary	0.01819	0.01260	0.03456	0.02254	-1.69958	-0.18537
Malta	0.00447	0.00399	0.00848	0.00713	-4.01833	5.37560
Netherlands	0.01965	0.01832	0.03732	0.03276	-1.59538	-0.77752
Austria	0.01511	0.01097	0.02870	0.01961	-2.12293	0.12153
Poland	0.04144	0.03743	0.07871	0.06694	1.46531	-0.08689
Portugal	0.01819	0.01304	0.03456	0.02333	-1.69958	-0.28036
Romania	0.02124	0.02333	0.04035	0.04172	-1.26396	-0.62634
Slovenia	0.00598	0.00539	0.01135	0.00964	-3.31788	3.10243
Slovakia	0.01055	0.00838	0.02004	0.01499	-2.67225	0.82668
Finland	0.01055	0.00827	0.02004	0.01478	-2.67225	0.89704
Sweden	0.01511	0.01167	0.02870	0.02087	-2.12293	-0.04126
United Kingdom	0.04478	0.06077	0.08506	0.10867	2.23698	-0.48236
Council aggregate	0.52650	0.55919	1.00000	1.00000	0.00000	0.00000
European Parliament	0.02148	0.13070	n.a.	n.a.	n.a.	n.a.

Fig. 4 — Relative differences between the SSI and NSMP under Nice and Lisbon rules



is mainly linked to the two types of situations which cause SSI and NSMP to diverge: some of a country's swing positions that enter the SSI are not counted by the SMP because either (a) EP rather CM is pivotal for a particular preference configuration, or (b) EP and CM cannot agree on a change of the status quo.

Second, compared to our earlier findings, the inter-institutional distribution of power between EP and CM is practically unaffected by taking the true voting weight distribution in CM into account. At the aggregate inter-institutional level, the effect of intra-institutional voting weights is very small (in contrast to the intra-institutional quota), as already argued in Napel and Widgrén (2006). In particular, the difference between 0.527 vs. 0.022 reported as CM's and EP's respective SMP value here, and 0.590 vs. 0.023 reported in Napel and Widgrén (2006) is mainly due to the increase of CM's weight quota from about 72.2% for EU25 to 73.9% for EU27: a higher quota decreases the probability that a change of q can be agreed on by CM and EP; this reduces CM's expected influence on the outcome by more than EP.

Third, the perhaps most interesting observation is the distinct pattern in differences between SSI and NSMP under the Lisbon and Nice Treaties, i. e. how the voting rules matter qualitatively. Under the Nice rules, the SSI *underestimates* small countries' relative power. The left panel of Fig. 4 shows the monotonically increasing pattern of deviations. The switch between the SSI's underestimation of the influence of 'small' countries on codecision outcomes to an overestimation of 'large' countries' influence occurs between Romania and Poland.⁸ The right panel of Fig. 4 illustrates the opposite pattern of deviations between non-strategic and strategic relative power in CM under the Lisbon rules: the SSI *overestimates* small countries' relative power. The relative differences between the SSI and NSMP decrease monotonically; the watershed between 'small' and 'large' countries is this time located between Austria and Sweden.

How the pattern of the relative differences between SSI and NSMP values depends on the voting rules relates to the two types of 'miscountings', (a) and (b), of pivot positions by the SSI described above. Under the Lisbon rules, small countries' pivotal positions are more concentrated in the relative middle of X , since they mostly matter due to the membership criterion (see Figs. 2 and 3 above). EP's position π is a priori highly concentrated in the middle of X , too. This means that it will be relatively often the case that EP's ideal point π is closer to the status quo q than is CM's (= the small

⁸ Note that underestimation requires a corresponding overestimation by the definition of *relative* power.

country's) ideal point μ . Many of a small country's pivot positions hence do not translate into actual decision influence. Because of their comparatively more central conditional pivot position distribution, small countries lose relatively more of their intra-CM swings in this way than do large countries, i. e. the effect of (a) is more pronounced for them than for large countries.

However, having a more extreme conditional distribution of one's pivot positions, as large countries do, also comes with a disadvantage, namely a greater probability that the random status q is situated between π and μ . That means that EP and CM cannot agree on a change of the status quo, and that the corresponding purely intra-CM pivot position does not translate into influence on the decision either. Large countries lose relatively more of their intra-CM swing positions, which are counted by the SSI, in this way, i. e. the effect of (b) is more pronounced for them than small countries. Whether effect (a) or (b) dominates, and hence whether small or large countries' relative power is overstated by the SSI, depends on *how much* more to the extremes of X the pivot positions of large countries are located on average.

The higher decision quota under the Nice rules makes it more likely that EP and CM do not see mutual gains from striking a deal than under the Lisbon rules; so the magnitude of effect (b) relative to (a) is greater under the Nice Treaty. It turns out that (b) dominates (a) under the Nice rules, i. e. large CM members lose a greater share of their swings due to strategic interaction with EP than small members; hence the SSI understates the latter's true strategic power. For the Lisbon rules, the lower quota reduces the importance of (b) sufficiently to let (a) become dominant and to make small countries lose a greater share of their power in the process of turning a Council opinion into an EU decision than large countries; so the SSI overstates the actual influence of small countries on codecision outcomes for the Lisbon Treaty.

5. Concluding Remarks

In this paper, we have studied the intra-institutional distribution of power in the Council of Ministers assuming spatial preferences and strategic interaction with the EP according to the EU's codecision procedure. We have first derived the equilibrium outcome of the procedure considering arbitrary but fixed spatial preferences, and have then randomized these preferences in order to conduct a priori power analysis with constitutional relevance. To our knowledge, this study is the first to consider weighted voting in power analysis which is based on spatial preferences and a procedural voting model.

The paper allows three main conclusions: first, the numerical differences to our earlier assessment of the power relation between Council and Parliament turn out to be quite small. Disregarding intra-institutional voting weights in the study of inter-institutional power relations delivers a pretty good first approximation. As already found in Napel and Widgrén (2006), the distribution of power between EP and CM is very uneven: CM is by an order of magnitude more influential on codecision outcomes than EP a priori. Big individual member states like Germany are under the Nice rules more powerful from an a priori perspective than the European Parliament. The Lisbon Treaty, however, improves EP's power position considerably.

Second, the relative differences between the standard Shapley-Shubik index and our normalized measure of strategic power are not very big. This should, however, not be an excuse for continuing to disregard procedures and strategies in future analysis of intra-institutional power. There are clear differences between strategic power across different procedures which are not picked up by standard indices. For example, the individual power differences between the codecision procedure and the EU's *consultation procedure* are large; they significantly exceed the differences between the Nice vs. Lisbon intra-CM voting rule results reported here. Classical power measures should only serve as a first approximation. Of course, they can also be applied safely to situations where there is *no* inter-institutional interaction, or where agenda setting and amendment procedures are irrelevant. But neither is the case for the European Union.

Finally, as a methodological corollary to the second conclusion, we find that the criticism of Garrett and Tsebelis has its justification, but proves to be far less important numerically than conceptually. Whilst our strategic measure of power is, figuratively, a quite distant cousin of the SSI, which corrects problems of traditional indices by modeling preferences and strategies, it turns out that, at least in the context of the EU's codecision procedure,⁹ SMP and SSI are also close friends.

References

- Baldwin, R. and M. Widgrén (2004). Winners and losers under various dual majority rules for the EU Council of Ministers. In M. Wiberg (Ed.), *Reasoned Choices – Essays in Honour of Academy Professor Hannu Nurmi on the Occasion of His 60th Birthday*. The Finnish Political Science Association.

⁹ See Napel and Widgrén (2008) for a related strategic analysis of a priori power in the UN Security Council.

- Baldwin, R. E., E. Berglöf, F. Giavazzi, and M. Widgrén (2001). *Nice Try: Should the Treaty of Nice be Ratified?* Monitoring European Integration 11. London: Center for Economic Policy Research.
- Banzhaf, J. F. (1965). Weighted voting doesn't work: A mathematical analysis. *Rutgers Law Review* 19, 317–343.
- Felsenthal, D. and M. Machover (2001). The Treaty of Nice and qualified majority voting. *Social Choice and Welfare* 18, 431–464.
- Felsenthal, D. and M. Machover (2004). Analysis of QM rules in the draft Constitution for Europe proposed by the European Convention, 2003. *Social Choice and Welfare* 23, 1–20.
- Garrett, G. and G. Tsebelis (1999). Why resist the temptation to apply power indices to the European Union. *Journal of Theoretical Politics* 11, 291–308.
- Laruelle, A. and M. Widgrén (1998). Is the allocation of power among EU states fair? *Public Choice* 94, 317–340.
- Leech, D. (2002). Designing the voting system for the EU Council of Ministers. *Public Choice* 113, 437–464.
- Napel, S. and M. Widgrén (2004). Power measurement as sensitivity analysis – A unified approach. *Journal of Theoretical Politics* 16, 517–538.
- Napel, S. and M. Widgrén (2006). The inter-institutional distribution of power in EU codecision. *Social Choice and Welfare* 27, 129–154.
- Napel, S. and M. Widgrén (2008). Shapley-Shubik versus strategic power – Live from the UN Security Council. In M. Braham and F. Steffen (Eds.), *Power, Freedom and Voting – Essays in Honour of Manfred J. Holler*, pp. 99–118. Berlin: Springer-Verlag.
- Penrose, L. S. (1946). The elementary statistics of majority voting. *Journal of the Royal Statistical Society* 109, 53–57.
- Shapley, L. S. (1953). A value for n -person games. In H. W. Kuhn and A. W. Tucker (Eds.), *Contributions to the Theory of Games*, Volume II, pp. 307–317. Princeton, NJ: Princeton University Press.
- Shapley, L. S. and M. Shubik (1954). A method for evaluating the distribution of power in a committee system. *American Political Science Review* 48, 787–792.
- Steunenberg, B. (1994). Regulatory policymaking in a parliamentary setting. In P. Herder-Dorneich, K.-H. Schenk, and D. Schmidtchen (Eds.), *Jahrbuch für Neue Politische Ökonomie*, Volume 13, pp. 36–57. Tübingen: Mohr-Siebeck.
- Steunenberg, B. and T. Selck (2006). Testing procedural models of EU legislative decision-making. In R. Thomson, F. Stokman, C. Achen, and T. König (Eds.), *The EU Decides*, pp. 54–85. Cambridge University Press.
- Tsebelis, G. (1994). The power of the European Parliament as a conditional agenda setter. *American Political Science Review* 88, 128–142.
- Widgrén, M. (1994). Voting power in the EC and the consequences of two different enlargements. *European Economic Review* 38, 1153–1170.